

# Boots on the Ground 2024



# Mission Statement

**The mission of Lift Up Sarpy County is to help people get to a state of well-being by connecting those we serve with the most basic of needs.**

# Vision

Lift Up Sarpy County will help Sarpy County residents reach self-sustainability so all in our community can live in a state of well-being.



## PARTNERS

### LUSC Team Members

Tanya Gifford, Exec Director

Elci Warnell, Central Navigator

Amanda Nadrchal, Community Support

Tina Lichtenfeld, Housing Stability Case Mgr

### Board of Directors

Angie Lauritsen, President

Scott Mertz, Vice President

Efrain Rosas, Treasurer

Bruce Fountain, Secretary

Darla Berger

Deanna Wagner

Walter Garcia

Ilissa Talkington

Cece Khondowe

Dawn Herlacher

Deb Anderson

### FOUNDATIONS

Nebraska Children and Families Foundation

### EDUCATION

Bellevue Public Schools

Papillion La Vista Public Schools

Gretna Public Schools

ESU #3

Plattsmouth Community Schools

Sarpy County Head Start

### FAITH BASED

United Methodist Church, Papillion

Thanksgiving Church

Resurrection Evangelical Lutheran - Gretna

Bellevue Baptist

St. Vincent de Paul

Journey Church - Gretna

Bellevue Christian

Catholic Charities

Meadows Church

Calvary Church

All Seasons Church

### GOVERNMENT

DHHS

Sarpy County & Sheriff's Dept

Sarpy County Human Services

City of Bellevue & Police Dept

City of Gretna

City of Springfield

City of Papillion & Police Dept

City of LaVista & Police Dept

State of Nebraska

## NonProfits/Community Groups

Sarpy County CASA	Generation Diamond	Dept of Veterans Affairs
Habitat for Humanity, Inc.	Legal Aid of Nebraska	NE Total Care
Together, Inc.	Children's Hospital	Neighborgood Food Pantry
Metro Area Continuum Care for the Homeless	Nebraska Family Support Network	Heart Ministry
Nebraska Early Childhood Collaborative	ENCAP	Project Everlast
CHI/Alegent Hospitals	Nebraska Childrens Home Society	Midlands Community Foundation
Heartland Workforce Solutions	Bannister Academy	Gretna Public Schools Foundation
Family Housing Advisory Services	Equus Workforce Solutions	Bellevue Public Schools Foundation
Nebraska Children's Home Society	UNMC	Youth mart
All Communities Outreach Services	Heritage Health	Teen Reach
Community Alliance	Sarpy Housing Foundation	Vita Nova
LaVista Community Foundation	Gretna Neighbors	NE Appleseed
Papillion Schools Foundation	GOALS	The Bridge
Foster Love	TEAMS	Education Rights Counsel
Bellevue Housing Authority	Region 6	Moms with Momentum
Heartland Family Service	Bridges out of Poverty	Mercy Housing
Network for Good	Bright Futures Foundation	Child Savings Institute
Papillion Community Foundation	Molina Healthcare	MUD
Cedars Kids	Nebraska Workforce Development	OPPD
Healthy Blue	Lutheran Family Services	Black Hills Energy
50 Mile March	Gretna Neighbors	Dollar Energy
Moving Veterans Forward	Concord Mediation	NIFA
Goodwill	All Seasons Foundation	HUD
Creighton University	The Light House Café	Humble and Kind
Federal Housing Association	Sarpy/Cass Health Dept	Carole's House of Hope
Greater Works Network	Project House Works	Project Harmony
Project Everlast	United Way of the Midlands	Release Inc

## 2022-2023 Results

### SUPPORT SERVICE FUNDS DISTRIBUTED BETWEEN JULY 1 AND JUNE 30

Priority Area	Number of Requests	All Dollars	Percent of Total	Average Dollars per Request
Daily Living	40	\$8,424.27	2.3%	\$210.61
Education	0			
Employment	1	\$575.00	0.2%	\$575.00
Housing	178	\$228,682.47	62.0%	\$1,284.73
Mental Health	27	\$7,767.02	2.1%	\$287.67
Other	20	\$18,690.24	5.1%	\$934.51
Parenting	7	\$4,079.00	1.1%	\$582.71
Physical/Dental Health	0			
Transportation	154	\$68,505.20	18.6%	\$444.84
Utilities	103	\$32,298.26	8.8%	\$313.58
<b>2023 Total</b>	<b>530</b>	<b>\$369,021.46</b>	<b>--</b>	<b>\$696.27</b>
<i>2022 Total*</i>	<i>631</i>	<i>\$352,538.89</i>	<i>--</i>	<i>\$558.70</i>
<i>2021 Total*</i>	<i>247</i>	<i>\$181,780.29</i>	<i>--</i>	<i>\$735.95</i>

*\*This amount includes federal CARES Act funding that was distributed to communities in 2020-2021. Caution is required when comparing these funds to prior years.*



## SUMMARY OF PARTICIPANTS SERVED THROUGH MENTAL HEALTH OUTREACH

	July 1, 2022 – June 30, 2023
Number of Participants Served Directly	54
Number of Children Served Directly	28
Gender	
Male	11 (20.3%)
Female	43 (79.6%)
Disabilities	
Participants with Disabilities	2 (3.7%)
Children with Disabilities	20 (71.4%)
Qualify for Public Assistance	54 (100%)

## SUMMARY OF PARTICIPANTS SERVED THROUGH MATERNITY MATCH

	July 1, 2022 – June 30, 2023
Number of Participants Served Directly	10
Number of Children Served Directly	5
Gender	
Male	3 (30%)
Female	7 (70%)
Disabilities	
Participants with Disabilities	0
Children with Disabilities	0
Qualify for Public Assistance	5 (50%)

## SUMMARY OF PARTICIPANTS SERVED THROUGH CAR MATCH

	July 1, 2022 – June 30, 2023
Number of Participants Served Directly	21
Number of Children Served Directly	0
Gender	
Male	3 (14.2%)
Female	18 (85.7%)
Disabilities	
Participants with Disabilities	0
Children with Disabilities	0
Qualify for Public Assistance	10



## TRAININGS HOSTED TO ENHANCE SUPPORTED STRATEGIES

	Number of Trainings Held	Number of Organizations	Number of Individuals Trained
<b>July 1, 2022 – June 30, 2023</b>	13	150	1695

*Note. The numbers above do not represent an unduplicated count.*

*This section includes trainings that the collaborative supported, facilitated, or paid for during the evaluation year.*

How trainings strengthened the prevention system in the community
<ul style="list-style-type: none"> <li>• Financial Education</li> <li>• Diversity, Equity, Financial Education</li> <li>• Diversity, Child Wellbeing</li> <li>• All areas</li> <li>• Diversity</li> <li>• Financial</li> <li>• Advocating</li> <li>• Assistance</li> </ul>

## EVENTS HOSTED THAT EXTENDED OUTREACH EFFORTS TO CONNECT WITH FAMILIES

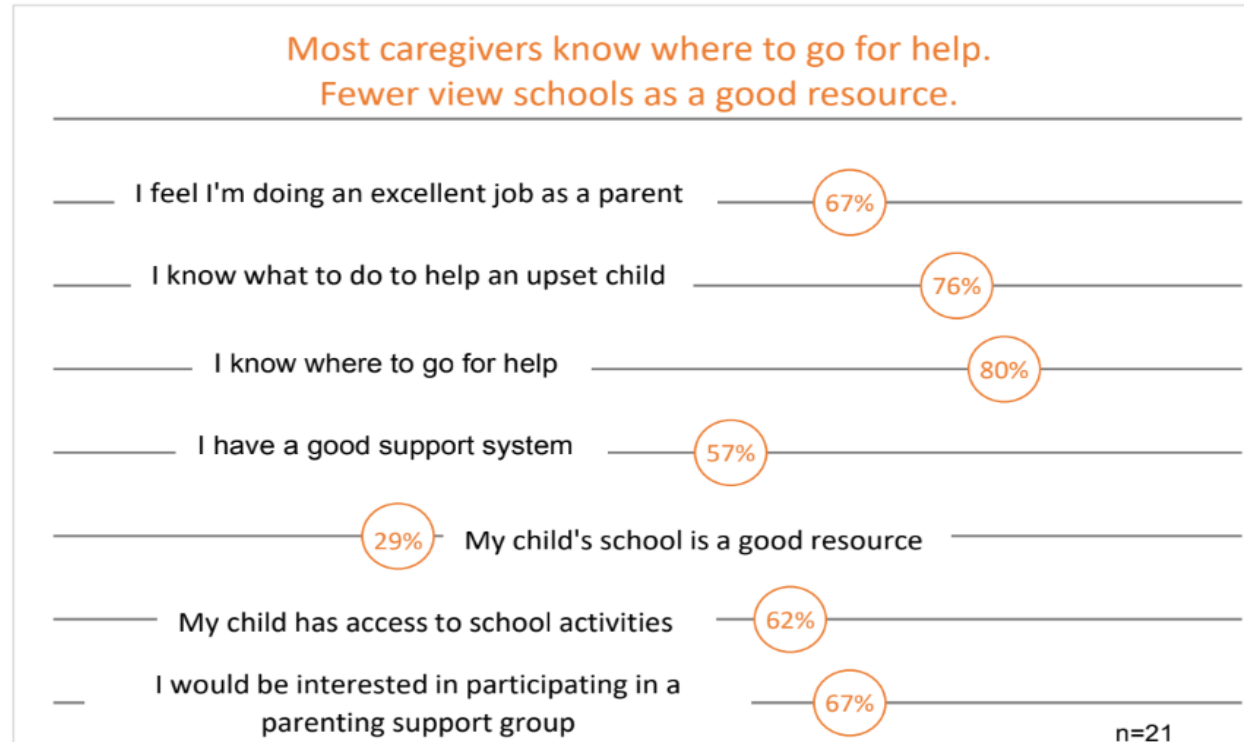
	Number of Events Held	Number of Individuals Engaged
<b>July 1, 2022 – June 30, 2023</b>	20	5,652

*Note. Numbers reported for the current evaluation year are estimates and not unduplicated counts.*

*This section includes events that the collaborative supported, facilitated, or paid for during the evaluation year.*

## Lift Up Sarpy: Local Evaluation Work 2022-2023

During the 2022-2023 evaluation year, Community Well-Being collaboratives were provided the opportunity to identify an area of the collaborative's work to receive an in-depth evaluation. After Lift Up Sarpy County's Community Response meeting, the collaborative identified a need to survey caregivers in their community to gain perspective for future caregiver supports that could be offered through the collaborative. Analysis of the responses identified key areas; these data are explored in the visuals below of 21 survey responses.



# NEBRASKA EMERGENCY RENTAL ASSISTANCE

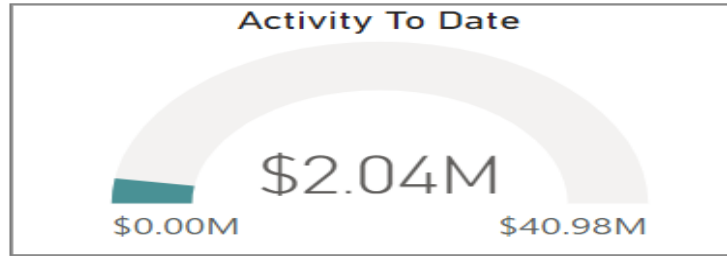
03/11/2024

Last Refresh Date

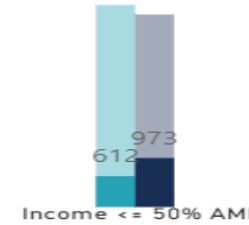
03/10/2024

Data Through

**7844** Total Applications      **1585** Number of Applicants

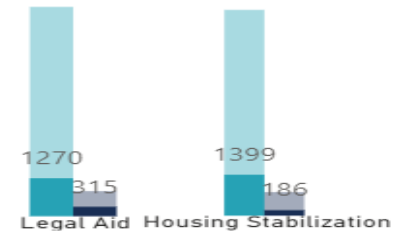


Income <= 50% AMI



Referrals

● No ● Yes



Select by Status



All

View by County →

View by City →

## Nebraska County View



Sarpy County Only - \$2.04 million of \$4.25 million spent to date  
 279 have received payments as of 3/8  
 Out of the 207 applicants statewide receiving case mgt, 84 of them are assigned to LUSC

On February 9<sup>th</sup>, Governor Jim Pillen, DED Director K.C. Belitz, State Senator Rita Sanders, and Bellevue Mayor Rusty Hike held a news conference to announce the AHCP-HPP award of \$1.95 million to Housing Foundation for Sarpy Foundation. The organization will use it to build 13 homes in Bellevue, to the west of Offutt Air Force Base.



*State and local leaders celebrate the announcement of disaster recovery housing funds to support home construction in Bellevue (from left to right: Carolyn Pospisil, Executive Director of Housing Foundation for Sarpy County; State Senator Rita Sanders; Governor Jim Pillen; Bellevue Mayor Rusty Hike; DED Director K.C. Belitz).*





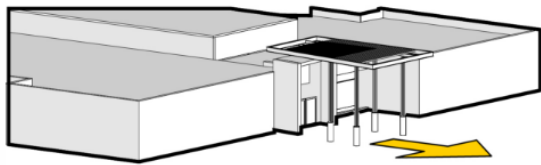
## Services & Who

- meal based
- delivery
- hours & intake
- financial hardship
- case management
- financial coaching, budgeting, goal setting

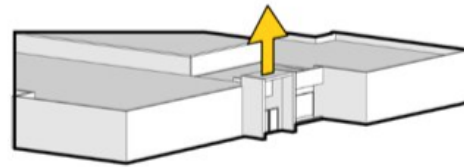


# Looking Forward

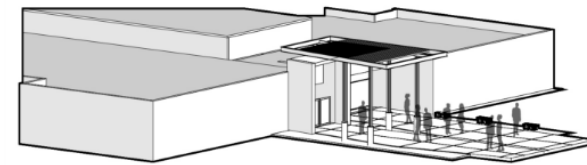




Protection



Increase Entry Prominence



Extend into Community







ENCAP - SCHEMATIC UPDATE  
REV: 09.08.2023



TACKarchitects



ENCAP - SCHEMATIC UPDATE  
REV: 09.08.2023



TACKarchitects



ENCAP - SCHEMATIC UPDATE  
REV: 09.08.2023



TACKarchitects



ENCAP - SCHEMATIC UPDATE  
REV: 09.08.2023



TACKarchitects



ENCAP - SCHEMATIC UPDATE (INTERIORS)  
REV: 9.21.2023



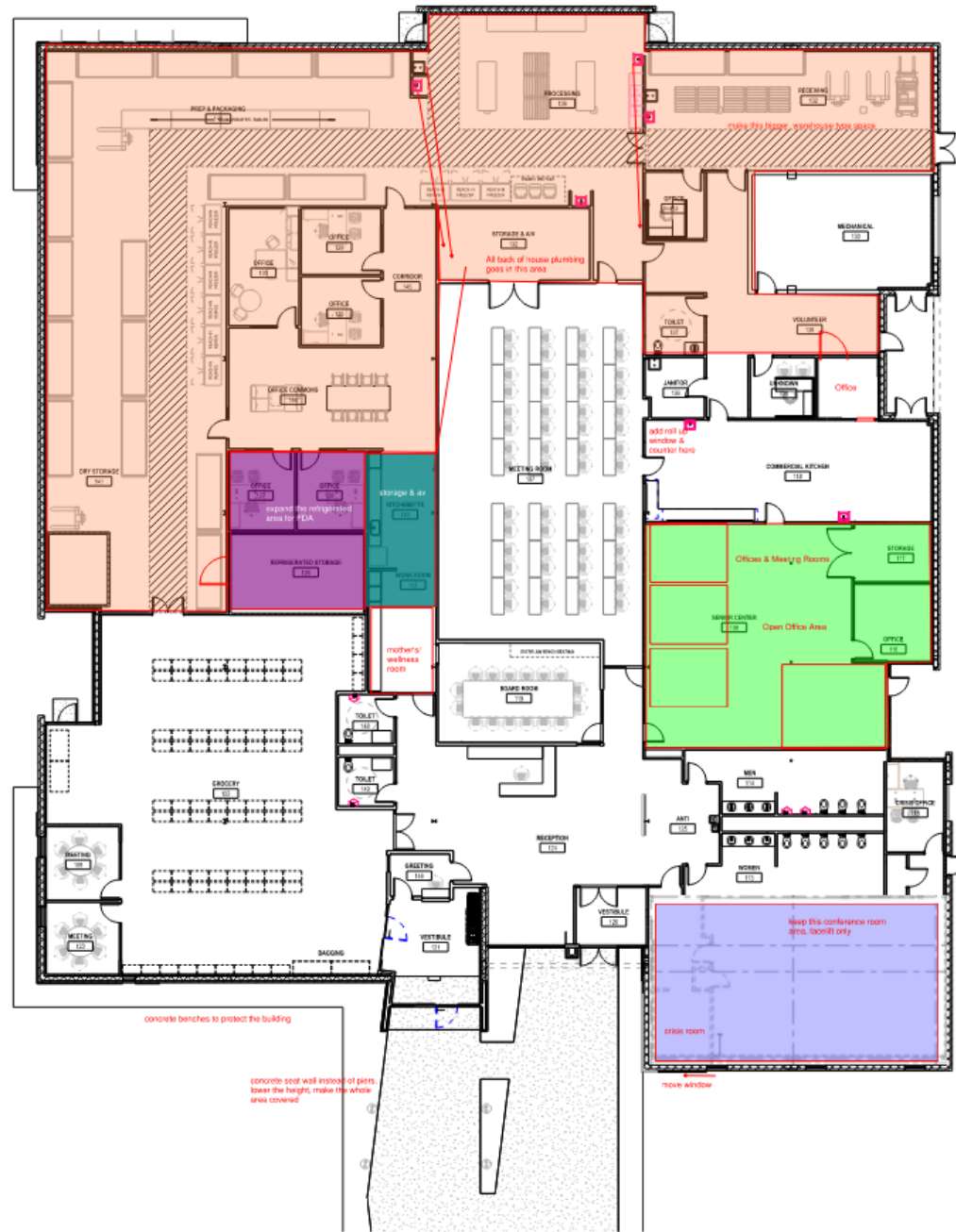
TACKarchitects



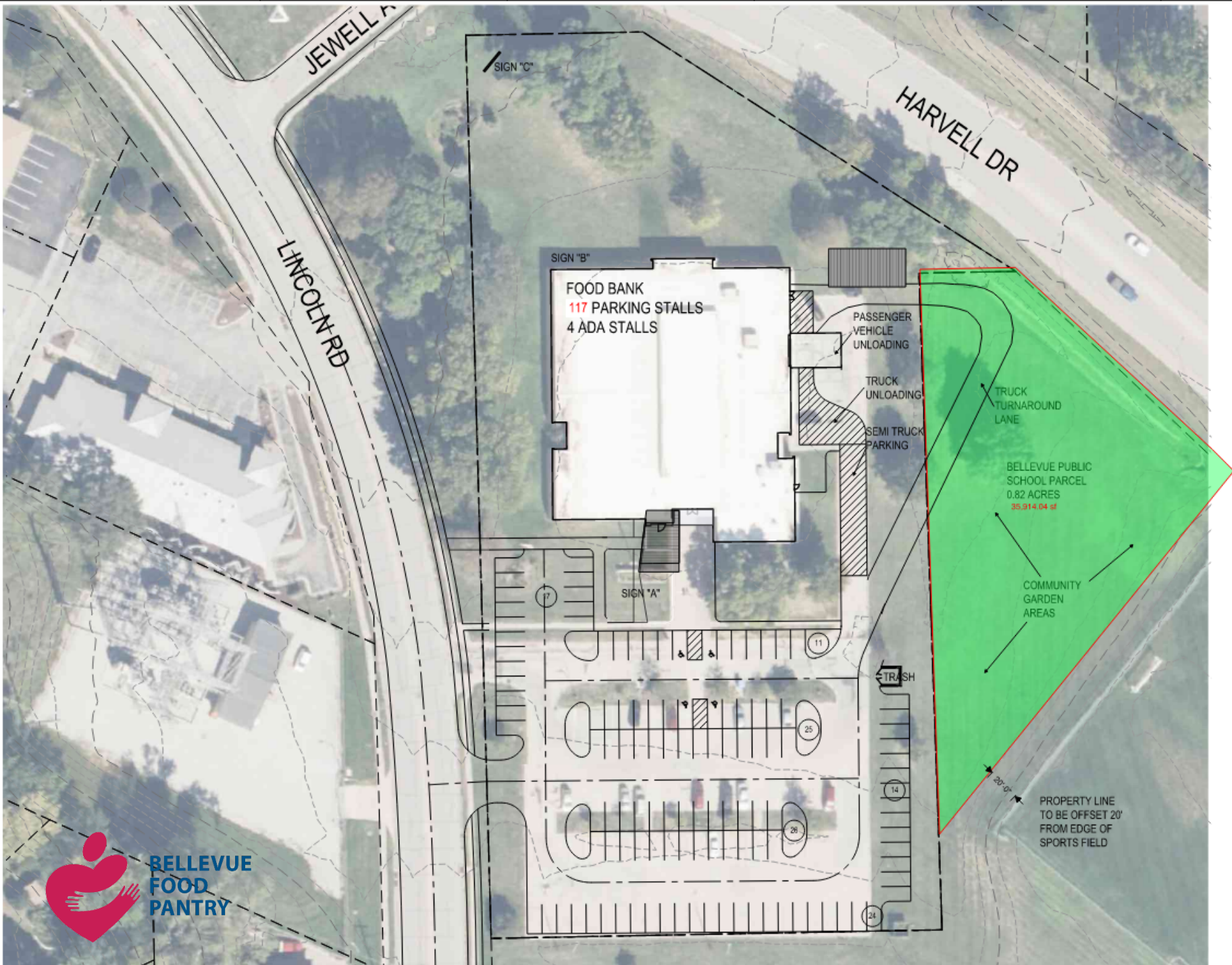


ENCAP - SCHEMATIC UPDATE (INTERIORS)  
REV: 9.21.2023

TACKarchitects









THANK YOU!

— CONGRESSMAN —  
**MIKE**  **FLOOD**  
PROUDLY SERVING NEBRASKA'S FIRST DISTRICT



# Omaha Bridges

## Getting Ahead in Omaha

There are more than 100,000 people living in poverty in the Omaha / Council Bluffs metro area. Omaha Bridges Out of Poverty was created to solve this problem. Through our partnerships and successful Getting Ahead curriculum, we are on our way to achieving our long-term goal of reducing poverty in the metro area by 50% over the next decade.

**91%**

GRADUATION RATE FROM  
GETTING AHEAD 8-10  
WEEK CLASSES

**1,412**

GRADUATES

**\$18K**

AVERAGE INCREASE IN  
INCOME

# Goals 2024

## Community & Elected Officials

- **Increase understanding of the needs in Sarpy County**
- **Focus on preventative efforts (parenting and financial education) and partnerships with organizations that lead this work.**
- **Increase understanding of what LUSC does, how they do it**
- **Increase engagement with LUSC**
- **Increase metrics reporting**
- **Increase communication points and frequency of LUSC-specific content**
- **Increase participation in family engagement activities in the community**

# Upcoming Events in 2024:

March – Friday Nights at Blackstone Theater

April – Community Cares Day at Applebee's

June 29 & 30 – Sarpy Slugfest Softball Tournament

August – Sarpy County Fair

October – Shining Stars Event & Community Halloween Parade

Sarpy County Leadership – Pickleball Tournament

Nov/Dec – Holiday Assistance partnerships

